



INSPEX 4K

DIGITAL MICROSCOPE
SYSTEMS





INSPEX 4K

ULTRA-HIGH-DEFINITION INSPECTION SYSTEM

Inspex 4K is an inspection solution which delivers four times the resolution of full HD inspection systems. Experience crystal clear ultra-high definition video imaging allowing you to see more detail than ever before.

A simple intuitive interface empowers the end user to inspect parts with ease, simplicity and comfort.

Speed up your inspection process by identifying defective parts faster, easier and in super high resolution. Inspex 4K offers high magnification, autofocus, manual focus, auto exposure, white balance and many more features.

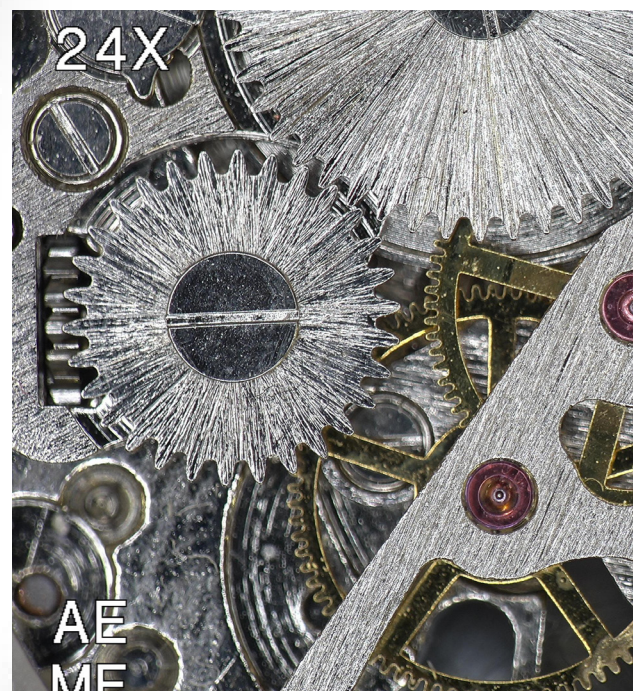
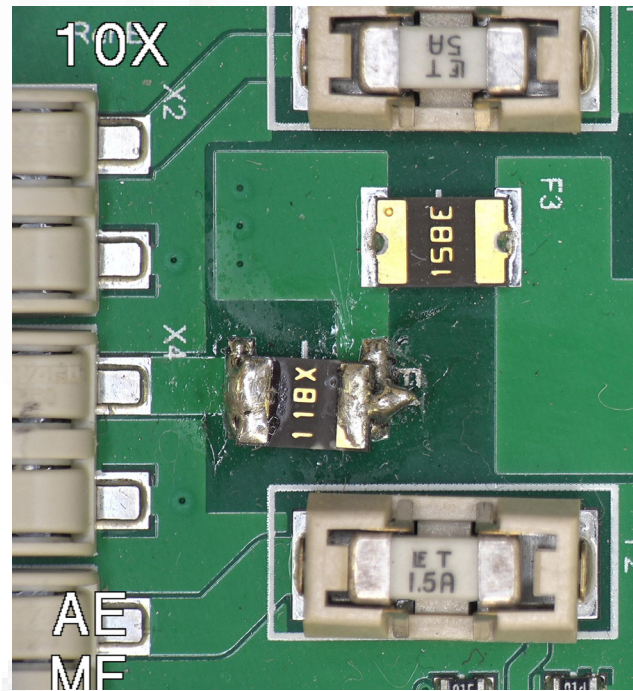
FEATURES & BENEFITS

Instantly transform your manufacturing process

 **Ultra HD Resolution**
3840 x 2160 pixels.

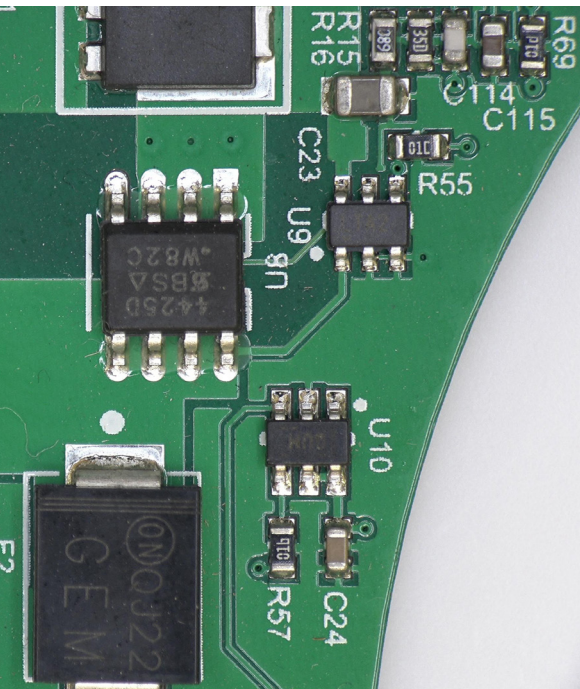
 **85x Optical Zoom**

 **170x Digital Zoom**



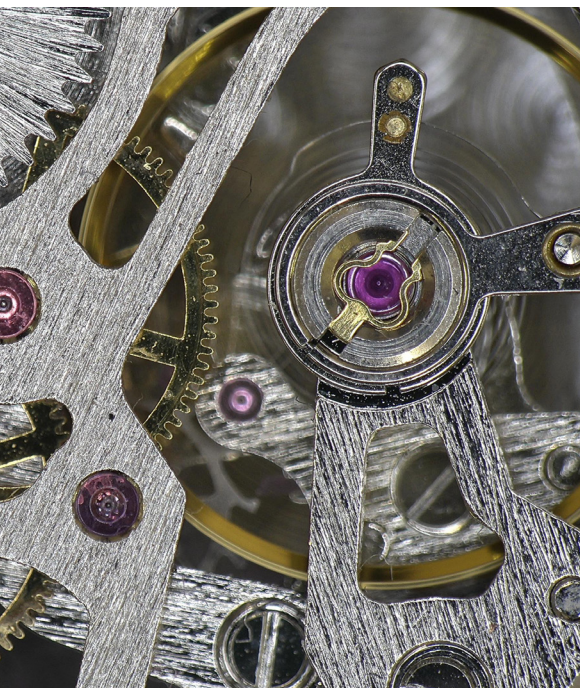
FEATURES & BENEFITS

Instantly transform your manufacturing process



 Higher Colour Depth and Superb Image Quality

 Improve Defect Detection



 Ergonomic Digital Solutions

FEATURES & BENEFITS

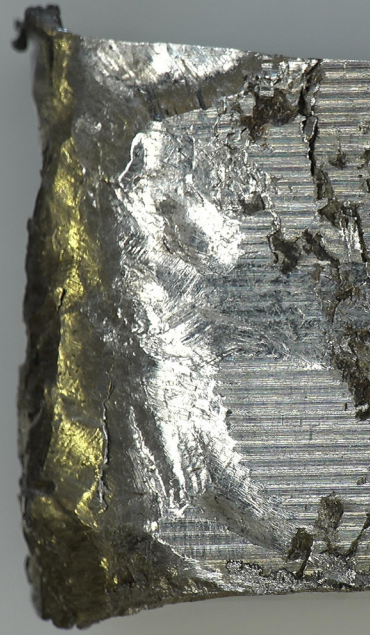
Instantly transform your manufacturing process

 Low Video Latency

 Reduce Production Waste

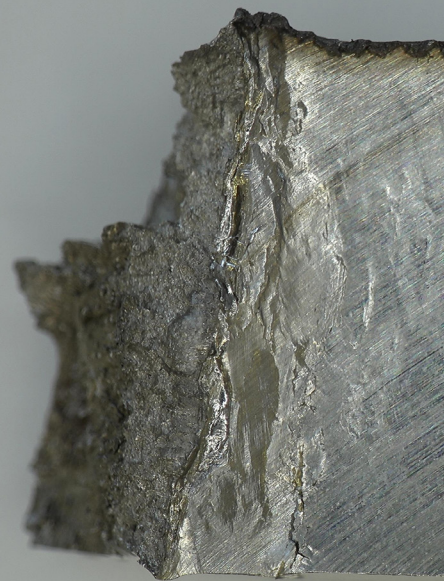
13X

AE
MF



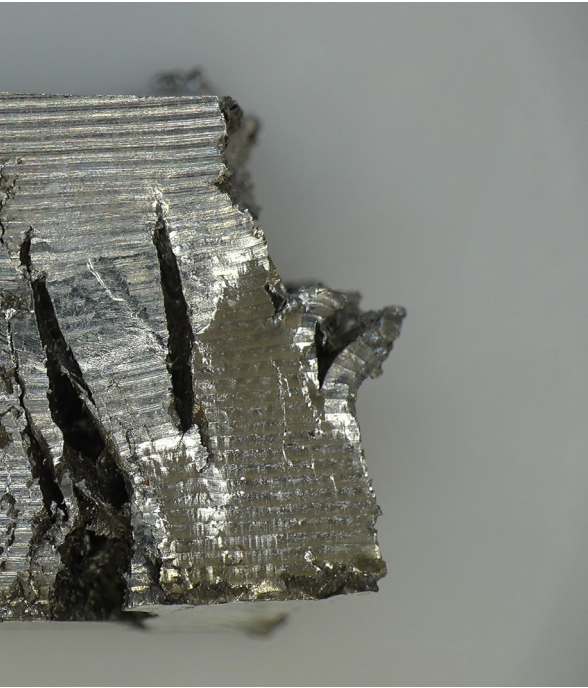
13X

AE
MF



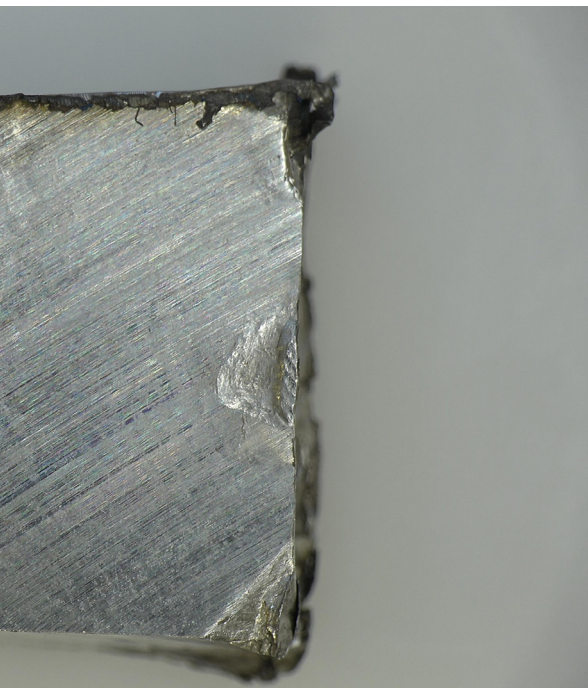
FEATURES & BENEFITS

Instantly transform your manufacturing process



 **Improve Throughput**

 **Increase Efficiency**



WHAT OUR CUSTOMERS SAY

**Creganna Medical - TE
Connectivity.**

Pádraig McVeigh

“Ash have provided excellent support from problem classification, through vision system development, right to fixturing and set-up support.

The speed of the response and ability to meet our tight timeline was very impressive. The availability and assistance from team members of all levels, from Sales to Engineering, was invaluable to our team.”

Fly Evidence
Andrew

"Ash Technologies provides a very high standard of both product and customer care - FlyEvidence highly recommends their products".

Included System Components



INSPEX 4K

FI806 - 006



LENSES

+10 Plan 1x



LIGHTS

Diffused LED DomeLight



OTHERS

27" Monitor

Optional System Components



LENSES

+10 Plan 1x
AI100-055



LIGHTS

Diffused LED DomeLight
AI100-045

Polarised Ringlight
AI801-423

UV Lighting
AI801-421



CONTROLLERS

KPIII Keypad
FI806-004

OTHERS

27" Monitor
MR100-060



STANDS & STAGES

Remium Track
Stand
AI100-043

Premium Illuminted
Track Stand
AI100-040

Technical Specifications

Magnification

	Lens Type	10 Plan 1x
Optical	Magnification Range	9 - 85
	Min FOV	44.7 - 25
	Max FOV	8.55 X 5
Digital	Magnification Range	86D - 170D
	Min FOV	8.5 X 4.95
	Max FOV	4.3 X 2.5
	Working Distance/mm	55
	Depth of Field/mm	min(11) max(0.2)
	Video Latency	40(25Hz) / 33(30Hz)

Technical Specifications

INSPEX 4K

Zoom Range	9 - 170
Camera Res	3840 × 2160
Monitor Connections	HDMI/DVI
Monitor Requirement	4K
Input/Output	HDMI (Output)
	USB 2.0 (x1)
	Mini USB (x1)
	General Purpose I/O (x3)
	DC Power Jack 24V
Internal Storage	N/A
Image Capture	Capture Card to PC
Power	24W
Dimensions	216mm x 165mm x 170mm
Weight	1.75kg
Operating Temp	Storage -10 to +60
	Operating +5 to +40



ASH HQ - Ireland
B5, M7 Business Park,
Naas, Co. Kildare
W91 P684
+353 (0) 45 88 22 12

ASH UK
Covert Farm, Long
Lane,
Easte Haddon,
Northamptonshire
NN6 8DU
+44 (0) 7592 523 767



reddot award
product design
winner



sales@ashvision.com

All systems are now multilingual.
Images, descriptions and technical data subject to change. Ash reserve the right to make changes without notice.



Printed on recycled paper