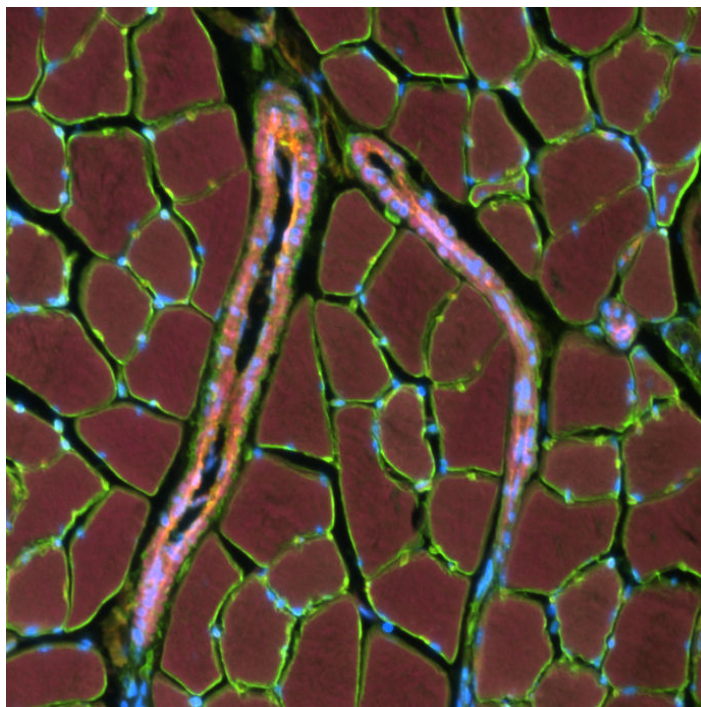


AURA Light Engine



Ideal OEM Solid-State Illumination for Brightness and Stability

Lumencor's AURA Light Engine is an ideal platform for manufacturers seeking to integrate the brightest and most dependable solid-state illumination into new bioanalytical instruments. Key features of the AURA Light Engine include:

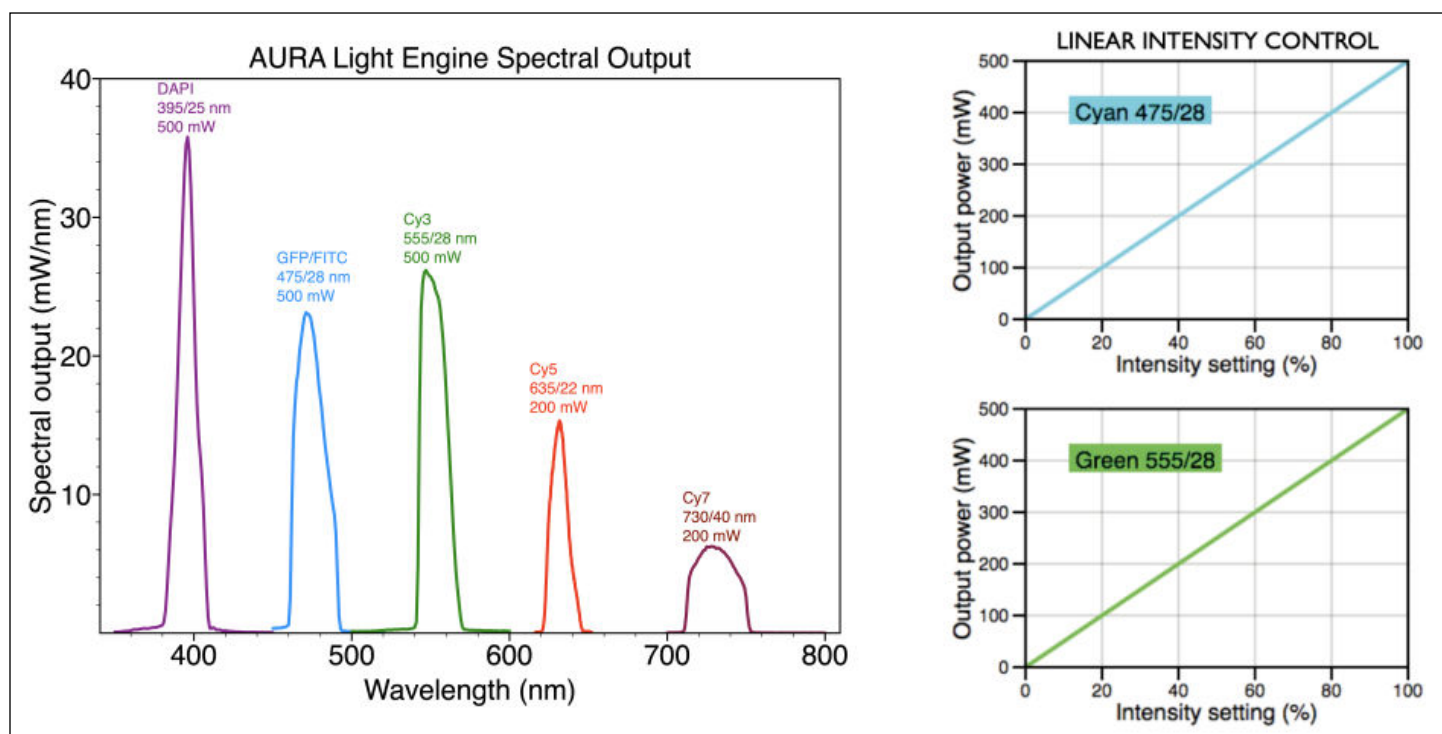
- Up to 5 independently controlled (on/off and intensity) light source channels
- 200 – 1000 mW output per source channel
- Low manufacturing variance for consistent unit-to-unit performance
- Source spectral outputs refined using integrated bandpass filters
- Onboard microprocessor with server/client architecture and embedded command library
- Optical power stabilization for exceptional reproducibility and quantitative accuracy
- Integral output adapter for liquid light guide or optical fiber delivery

The AURA Light Engine is designed to allow the spectral output to be customized according to application-specific requirements. The AURA features an advanced control

system based around an onboard microprocessor with an embedded command library. This allows control using simple and intuitive text string commands sent to the Light Engine via USB/RS-232 or TCP serial protocols. A GUI resident on the onboard microprocessor and viewed using a web browser via a LAN connection provides an easily accessible implementation of the command library. The command library is extensive, providing access to advanced control and monitoring functions in addition to the basic control functions of light source selection, on/off switching and output intensity adjustment. An onboard photodiode array monitors the light output and provides continuous power readings displayed by the resident GUI or other control software. The photodiode array also generates reference signals that can be applied to the light sources in a feedback loop to maintain constant light output over time.

As with all Lumencor products, OEM customization is available upon request.

For more information on the [AURA Light Engine](#), please contact us at info@lumencor.com. To receive a purchase quotation for a AURA Light Engine, please submit our online [quotation request form](#).



Features and Operating Characteristics:

Features

Details

Sources	Up to 5 independently selectable solid-state light source [1]
Filters	Integrally installed bandpass filters for spectral output refinement [2]
Output Power	200 - 500 mW per source channel (dependent on filter bandpass and light guide diameter) [3,4]
Light Delivery	Liquid light guide (LLG) or optical fiber
Safety Interlocks	Manual (key) and remote (electronic) light output safety interlocks
Control Interfaces	Serial (RS-232/USB), ethernet and TTL ports. RJ45 ethernet and USB A-to-USB B control cables included
Software	Onboard GUI or PC-based image acquisition software
Speed	TTL-triggered source channel switching up to 5 kHz
Optional Accessories	Light Enginecontrol pod [5]. DB15 to BNC breakout cable for TTL source triggering
Warranty	24 months
Power Requirements	220 W (24 V V/9.2 A) DC power supply included
Dimensions (W x L x H)	145 mm x 263 mm x 203 mm (5.7 in x 10.4 in x 8.0 in)

[1] Light sources may include LEDs, luminescent light pipes and lasers depending on output wavelength and power requirements.

[2] Specify bandpass filters when ordering. AURA Light Engines may also be ordered without filters. Filters are not field-exchangeable.

[3] Power outputs for each Light Engine are recorded on the Certificate of Conformance attached to the shipping documents e-mailed to the customer. Output is anticipated to remain above 70% of these values during the service lifetime of the Light Engine.

[4] Higher power outputs available via customization.

[5] Control pod connects to Light Engine USB port and controls source selection, light output on/off and intensity settings.